

1. PERFORMANCE

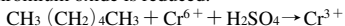
- 1) Measuring range : 0.1-1.32 % 0.05-0.6 %
 Number of pump strokes 1/2 (50mℓ) 1 (100mℓ)
- 2) Sampling time : 1 minute/1 pump stroke
- 3) Detectable limit : 50 ppm
- 4) Shelf life : 3 years
- 5) Operating temperature : 10 ~ 40 °C
- 6) Temperature compensation : Necessary (See "TEMPERATURE CORRECTION TABLE")
- 7) Reading : Direct reading from the scale calibrated by 1 pump stroke
- 8) Colour change : Orange → Dark green

2. RELATIVE STANDARD DEVIATION

RSD-low : 10 % RSD-mid. : 5 % RSD-high : 5 %

3. CHEMICAL REACTION

Chromium oxide is reduced.



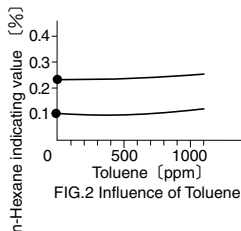
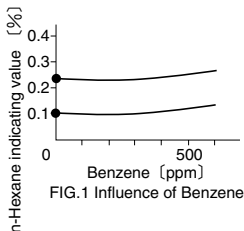
4. CALIBRATION OF THE TUBE

GAS CHROMATOGRAPHY

5. INTERFERENCE AND CROSS SENSITIVITY

Substance	Interference	ppm	Coexistence
Paraffin hydrocarbons	Similar stain is produced.		Higher readings are given.
Acetylene	∕		∕
Ethylene	∕		∕
Cyclohexane	∕		∕
Benzene FIG.1	Black stain is produced.	400	∕
Toluene FIG.2	∕	800	∕
Xylene	∕	2,000	∕

In presence of Alcohols, Ketones or Esters less than 6 %, the accuracy of readings is not affected.



TEMPERATURE CORRECTION TABLE

Scale Readings (%)	True Concentration (%)				
	10 °C (50 °F)	15 °C (59 °F)	20 °C (68 °F)	30 °C (86 °F)	40 °C (104 °F)
0.6	0.78	0.67	0.60	0.53	0.49
0.5	0.62	0.54	0.50	0.45	0.41
0.4	0.48	0.43	0.40	0.36	0.34
0.3	0.34	0.32	0.30	0.28	0.26
0.2	0.22	0.21	0.20	0.19	0.18
0.1	0.10	0.10	0.10	0.10	0.10

(NOTE)

In case of 1/2 strokes, following formula is available for the actual concentration.

Actual concentration = 2.2 × Temperature corrected value