

## 1. PERFORMANCE

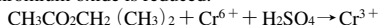
- 1) Measuring range : 10-400 ppm  
Number of pump strokes : 1 (100mℓ)
- 2) Sampling time : 1.5 minutes/1 pump stroke
- 3) Detectable limit : 3 ppm
- 4) Shelf life : 1 year
- 5) Operating temperature : 10 ~ 40 °C
- 6) Temperature compensation : Necessary (See "TEMPERATURE CORRECTION TABLE")
- 7) Reading : Direct reading from the scale calibrated by 1 pump stroke
- 8) Colour change : Pale yellow → Pale blue (The top of discoloured layer is Brown, but read at the top of Pale blue.)

## 2. RELATIVE STANDARD DEVIATION

RSD-low : 10 % RSD-mid. : 5 % RSD-high : 5 %

## 3. CHEMICAL REACTION

Chromium oxide is reduced.



## 4. CALIBRATION OF THE TUBE

GAS CHROMATOGRAPHY

## 5. INTERFERENCE AND CROSS SENSITIVITY

Substance	Interference	Coexistence
Esters	Similar stain is produced.	Higher readings are given.
Alcohols	∕	∕
Ketones	∕	∕
Halogenated hydrocarbons FIG.1	Whole reagent is changed to Brown.	∕

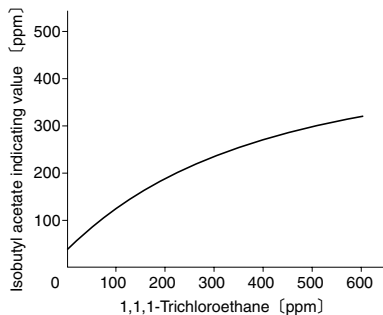


FIG.1 Influence of 1,1,1-Trichloroethane

### TEMPERATURE CORRECTION TABLE

Scale Readings (ppm)	True Concentration (ppm)						
	10 °C (50 °F)	15 °C (59 °F)	20 °C (68 °F)	25 °C (77 °F)	30 °C (86 °F)	35 °C (95 °F)	40 °C (104 °F)
400	—	—	400	285	240	210	190
300	—	—	300	225	190	170	160
200	—	275	200	165	140	130	120
150	—	195	150	125	110	103	95
100	—	120	100	90	80	75	70
50	70	55	50	45	40	40	35
30	40	35	30	25	20	20	20
15	20	15	15	15	10	10	10