

## 1. PERFORMANCE

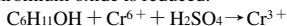
- 1) Measuring range : 5-500 ppm  
Number of pump strokes : 2 (200ml)
- 2) Sampling time : 3 minutes/2 pump strokes
- 3) Detectable limit : 2 ppm
- 4) Shelf life : 2 years
- 5) Operating temperature : 10 ~ 40 °C
- 6) Temperature compensation : Necessary (See "TEMPERATURE CORRECTION TABLE")
- 7) Reading : Direct reading from the scale calibrated by 2 pump strokes
- 8) Colour change : Yellow → Pale blue

## 2. RELATIVE STANDARD DEVIATION

RSD-low : 10 % RSD-mid. : 10 % RSD-high : 10 %

## 3. CHEMICAL REACTION

Chromium oxide is reduced.

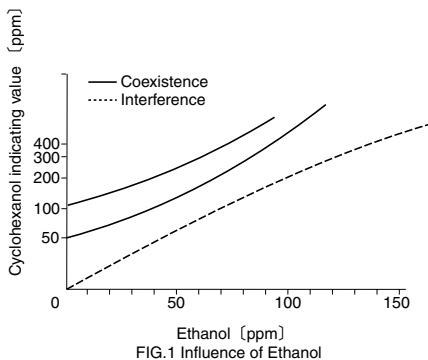


## 4. CALIBRATION OF THE TUBE

GAS CHROMATOGRAPHY

## 5. INTERFERENCE AND CROSS SENSITIVITY

Substance	Interference	Coexistence
Aliphatic hydrocarbons	Whole reagent is changed to Pale brown.	The accuracy of reading is not affected.
Aromatic hydrocarbons	∕	∕
Halogenated hydrocarbons	∕	∕
Alcohols	FIG.1 Similar stain is produced.	Higher readings are given.
Esters	Pale ringed stain is produced near the bottom of the reagent.	The accuracy of reading is not affected.



TEMPERATURE CORRECTION TABLE

Scale Readings (ppm)	True Concentration (ppm)							
	10 °C (50 °F)	15 °C (59 °F)	20 °C (68 °F)	25 °C (77 °F)	30 °C (86 °F)	35 °C (95 °F)	40 °C (104 °F)	45 °C (113 °F)
500	—	—	500	380	280	210	160	120
400	—	520	400	300	230	170	130	100
300	—	400	300	220	170	130	100	75
200	—	270	200	140	110	90	70	55
100	230	140	100	90	70	50	40	30
50	90	70	50	40	35	20	15	10
30	50	40	30	25	18	14	10	7
10	18	13	10	8	6	4	2	1
5	9	7	5	4	3	2	1	0.5